



Savitribai Phule Shikshan Prasarak Mandal's
SKN SINHGAD COLLEGE OF ENGINEERING

(Approved by AICTE, Recognized by DTE (MS) & Affiliated to Solapur University)

Accredited 'A' Grade by NAAC

DTE Code : EN-6643

Prof. M. N. Navale
M. E. (Elect.), MIE(I), MBA
PRESIDENT

Mr. Rohit M. Navale
M. E. (Mech.)
GENERAL SECRETARY

Dr. K. J. Karande
M. Tech. Ph. D. (E&TC)
PRINCIPAL

Ref No -SKNSCOE/ 2019-20 /Sem-I/Policy/21

Date -12/07/2019

PLACEMENT CELL AND ITS POLICIES

Table of Content	
Sr. No.	Contents
1	Placement Cell and Its Policies i) Vision ii) Mission iii) Our philosophy iv) Placement Team v) Training Team vi) Placement Policy vii) Placement Process

(To be implemented from A.Y. 2019-20)



Savitribai Phule Shikshan Prasarak Mandal's
SKN SINHGAD COLLEGE OF ENGINEERING

(Approved by AICTE, Recognized by DTE (MS) & Affiliated to Solapur University)

Accredited 'A' Grade by NAAC

DTE Code : EN-6643

Prof. M. N. Navale
M. E. (Elect.), MIE(I), MBA
PRESIDENT

Mr. Rohit M. Navale
M. E. (Mech.)
GENERAL SECRETARY

Dr. K. J. Karande
M. Tech. Ph. D. (E&TC)
PRINCIPAL

Ref No -SKNSCOE/ 2019-20 /Sem-I/Policy/21

Date -12/07/2019

TRAINING AND PLACEMENT CELL

Vision

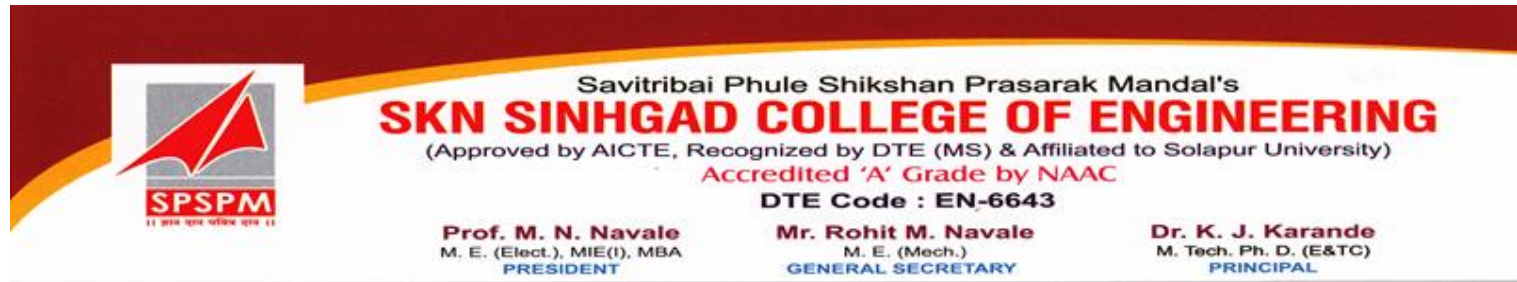
- To develop national and international links with the business organizations to be able to create meaningful relationship & opportunities for the placement of the students in the global job markets.
- To develop students who are globally employable & ready hands to the industry

Mission

- To strengthen and enhance Industry – Institute partnership by way of campus connect, internships.
- To create maximum opportunities for the placements of the eligible students in the job market by establishing a rapport with the industry people.
- To impart overall development training to the students to face the competitive era.

Our Philosophy

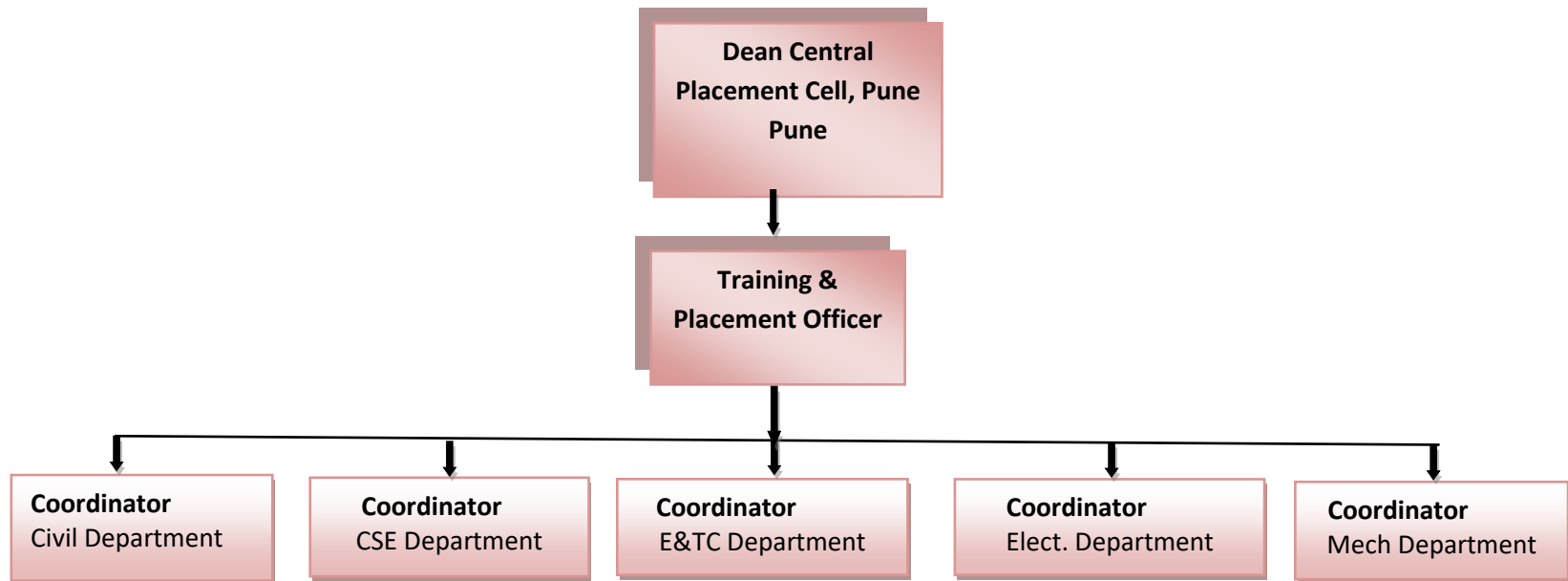
- To equip the students with technical skills imbued with the spirit of professionalism.
- To ensure placement in the reputed industries.

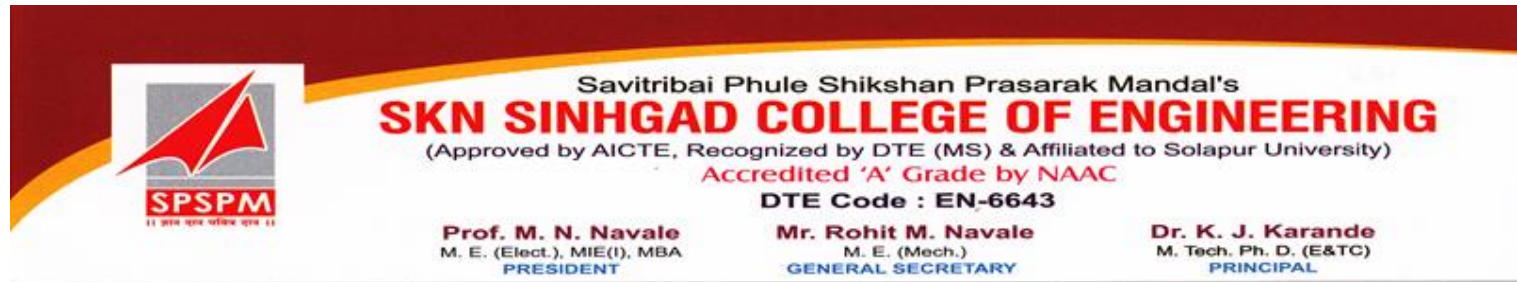


Ref No -SKNSCOE/ 2019-20 /Sem-I/Policy/21

Date -12/07/2019

TEAM MEMBERS OF SKNSCOE, PLACEMENT CELL

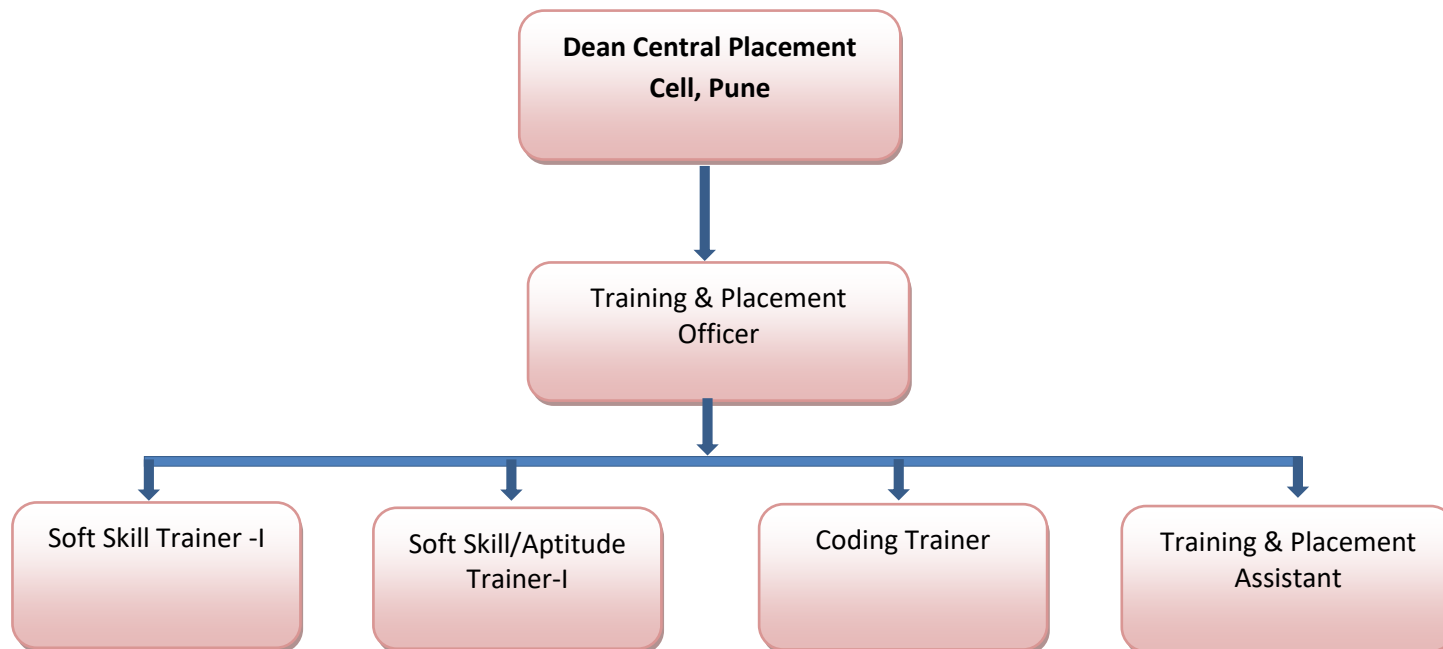




Ref No -SKNSCOE/ 2019-20 /Sem-I/Policy/21

Date -12/07/2019

TEAM MEMBERS OF SKNSCOE, TRAINING CELL





Savitribai Phule Shikshan Prasarak Mandal's
SKN SINHGAD COLLEGE OF ENGINEERING

(Approved by AICTE, Recognized by DTE (MS) & Affiliated to Solapur University)
Accredited 'A' Grade by NAAC

DTE Code : EN-6643

Prof. M. N. Navale
M. E. (Elect.), MIE(I), MBA
PRESIDENT

Mr. Rohit M. Navale
M. E. (Mech.)
GENERAL SECRETARY

Dr. K. J. Karande
M. Tech. Ph. D. (E&TC)
PRINCIPAL

Ref No -SKNSCOE/ 2019-20 /Sem-I/Policy/21

Date -12/07/2019

Placement Policy

- All eligible students need to register on institute placement portal as well as CPC (Central Placement Cell), Pune Portal.
- Once a student is placed, is not allowed to appear for future campus drive.
- Students who fail to attend the placement drive after registration will be debarred for next upcoming campus drives.
- Students should come in formal dress along with hard copies of their documents.
- All queries regarding placement drive will be handled by the placement coordinators.

Placement

- Company research and invite to companies for campus recruitment
- Sharing job description and selection process with students
- Registration of interested students on Institute/CPC placement portal.
- Sharing registered candidates' data with company and finalization of campus drive date



Savitribai Phule Shikshan Prasarak Mandal's
SKN SINHGAD COLLEGE OF ENGINEERING

(Approved by AICTE, Recognized by DTE (MS) & Affiliated to Solapur University)
Accredited 'A' Grade by NAAC

DTE Code : EN-6643

Prof. M. N. Navale
M. E. (Elect.), MIE(I), MBA
PRESIDENT

Mr. Rohit M. Navale
M. E. (Mech.)
GENERAL SECRETARY

Dr. K. J. Karande
M. Tech. Ph. D. (E&TC)
PRINCIPAL

Ref No -SKNSCOE/ 2019-20 /Sem-I/Policy/21

Date -12/07/2019

General process of selection on campus

- Pre-placement Talk
- Aptitude Test
- Document Verification
- Group Discussion/Extempore
- Technical Interview
- HR Interview
- Declaration of selected candidates on same day or as per the company policy.
- Company sends Offer letters to Central Placement Cell or Institute Placement Cell or to the selected students as per individual company policy.



Dr. K. J. Karande
Principal